



# MEK-7 Polyclonal Antibody

<b>Catalog No</b>	YP-Ab-14842
<b>Isotype</b>	IgG
<b>Reactivity</b>	Human;Mouse;Rat
<b>Applications</b>	WB;IHC
<b>Gene Name</b>	MAP2K7
<b>Protein Name</b>	Dual specificity mitogen-activated protein kinase kinase 7
<b>Immunogen</b>	The antiserum was produced against synthesized peptide derived from human MAP2K7. AA range:241-290
<b>Specificity</b>	MEK-7 Polyclonal Antibody detects endogenous levels of MEK-7 protein.
<b>Formulation</b>	Liquid in PBS containing 50% glycerol, 0.5% BSA and 0.02% sodium azide.
<b>Source</b>	Polyclonal, Rabbit,IgG
<b>Purification</b>	The antibody was affinity-purified from rabbit antiserum by affinity-chromatography using epitope-specific immunogen.
<b>Dilution</b>	WB 1:500-2000;IHC-p 1:50-300
<b>Concentration</b>	1 mg/ml
<b>Purity</b>	≥90%
<b>Storage Stability</b>	-20°C/1 year
<b>Synonyms</b>	MAP2K7; JNKK2; MEK7; MKK7; PRKMK7; SKK4; Dual specificity mitogen-activated protein kinase kinase 7; MAP kinase kinase 7; MAPKK 7; JNK-activating kinase 2; MAPK/ERK kinase 7; MEK 7; Stress-activated protein kinase kinase 4; SAPK kinase 4; S
<b>Observed Band</b>	47kD
<b>Cell Pathway</b>	Nucleus. Cytoplasm .
<b>Tissue Specificity</b>	Ubiquitous; with highest level of expression in skeletal muscle. Isoform 3 is found at low levels in placenta, fetal liver, and skeletal muscle.
<b>Function</b>	catalytic activity:ATP + a protein = ADP + a phosphoprotein.,cofactor:Magnesium.,enzyme regulation:Activated by phosphorylation by specific MAP kinase kinase kinases such as MAP3K1/MEKK1, MAP3K3/MEKK3, MAP3K11/MLK3 and MAP3K12/DLK.,function:Stress activated, dual specificity kinase that activates the JUN kinases MAPK8/JNK1, MAPK9/JNK2 and MAPK10/JNK3.,PTM:Activated by phosphorylation on Ser/Thr.,similarity:Belongs to the protein kinase superfamily. STE Ser/Thr protein kinase family. MAP kinase subfamily.,similarity:Contains 1 protein kinase domain.,tissue specificity:Ubiquitous; with highest level of expression in skeletal muscle. Isoform 3 is found at low levels in placenta, fetal liver, and skeletal muscle.,

**Background**

The protein encoded by this gene is a dual specificity protein kinase that belongs to the MAP kinase kinase family. This kinase specifically activates MAPK8/JNK1 and MAPK9/JNK2, and this kinase itself is phosphorylated and activated by MAP kinase kinase kinases including MAP3K1/MEKK1, MAP3K2/MEKK2, MAP3K3/MEKK5, and MAP4K2/GCK. This kinase is involved in the signal transduction mediating the cell responses to proinflammatory cytokines, and environmental stresses. Alternative splicing results in multiple transcript variants. [provided by RefSeq, Jul 2014],

**matters needing attention**

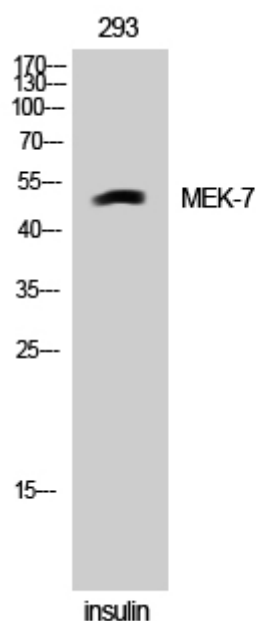
Avoid repeated freezing and thawing!

**Usage suggestions**

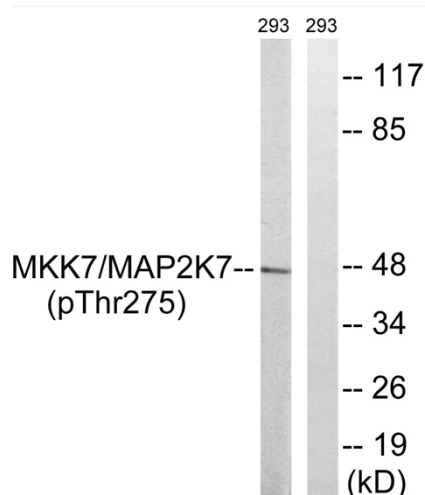
This product can be used in immunological reaction related experiments. For more information, please consult technical personnel.



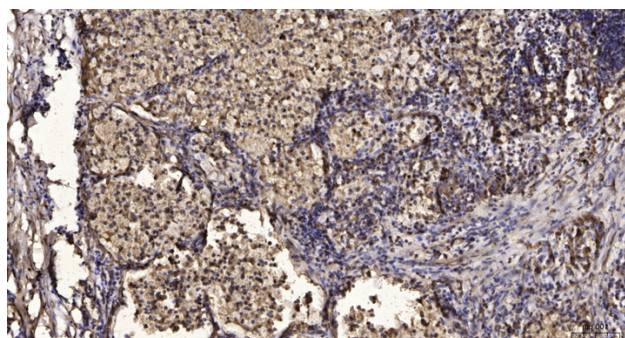
## Products Images



Western Blot analysis of 293 cells using MEK-7 Polyclonal Antibody



Western blot analysis of lysates from 293 cells treated with insulin 0.01U/ml 15', using MAP2K7 Antibody. The lane on the right is blocked with the synthesized peptide.



Immunohistochemical analysis of paraffin-embedded human Squamous cell carcinoma of lung. 1, Antibody was diluted at 1:200(4° overnight). 2, Tris-EDTA,pH9.0 was used for antigen retrieval. 3,Secondary antibody was diluted at 1:200(room temperature, 45min).